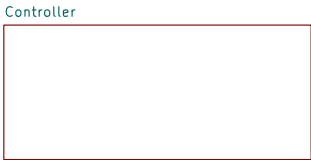


- \* Charger:
  - TP4056X
  - TP4054
- \* Protection:
  - NT1715A, 0.14
  - DW01A, 0.05
  - XB6206AE, 0.18
  - DW01A, 0.03
- \* USB
  - CP2102, 2.10
- \* ESP
  - ESP32-WROOM-32, 2.45
- \* Sepic
  - ADP1612, 2.11
  - LMR62421, 2.07
  - TPS61023, 0.38



Date: power\_supply.kicad\_sch



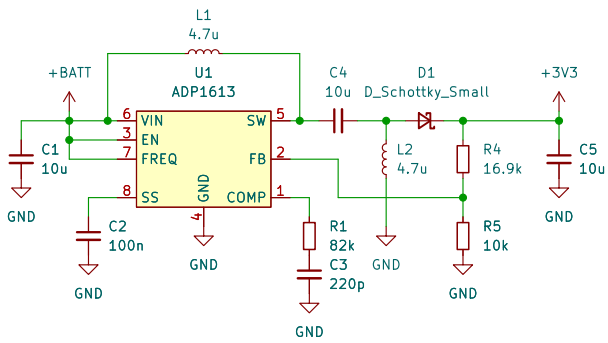
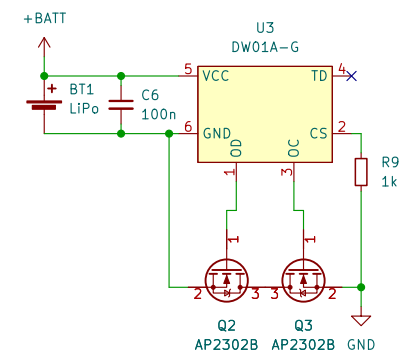
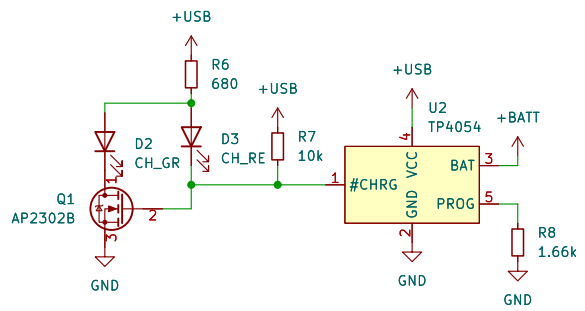
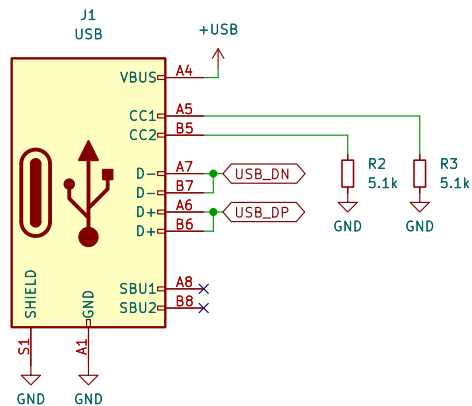
Date: controller.kicad\_sch



Date: sensors.kicad\_sch



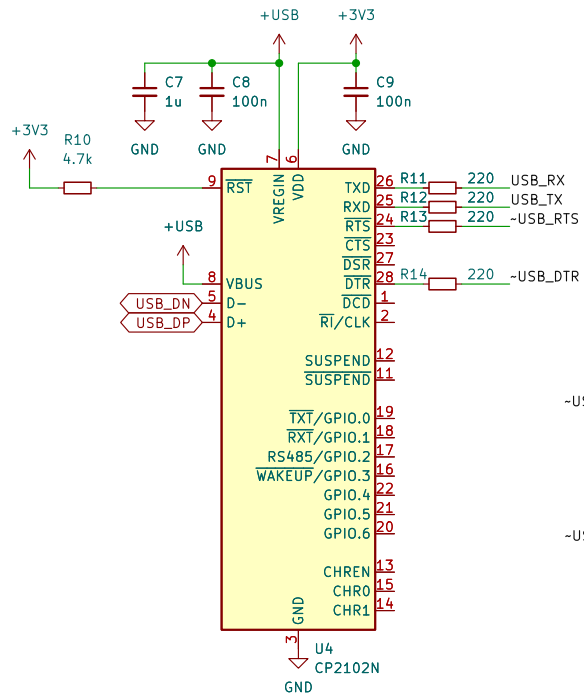
Sheet: /		Date:	
File: OBSPPro.kicad_sch			
<b>Title:</b>			
Size: A4	Date:		Rev:
KiCad E.D.A. kicad (6.0.8)			Id: 1/4



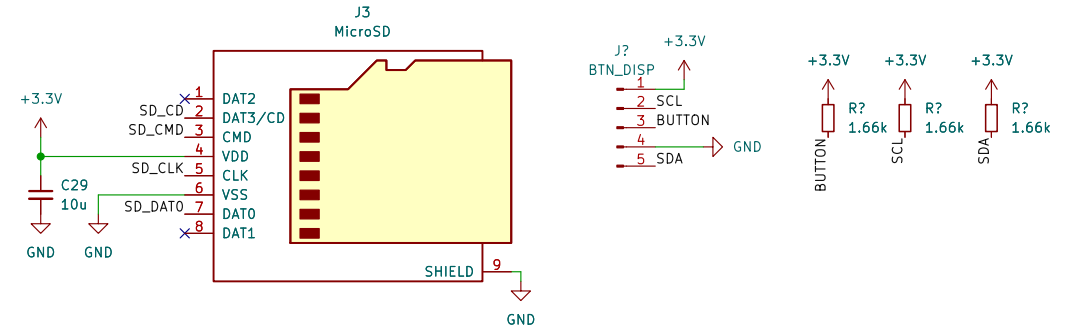
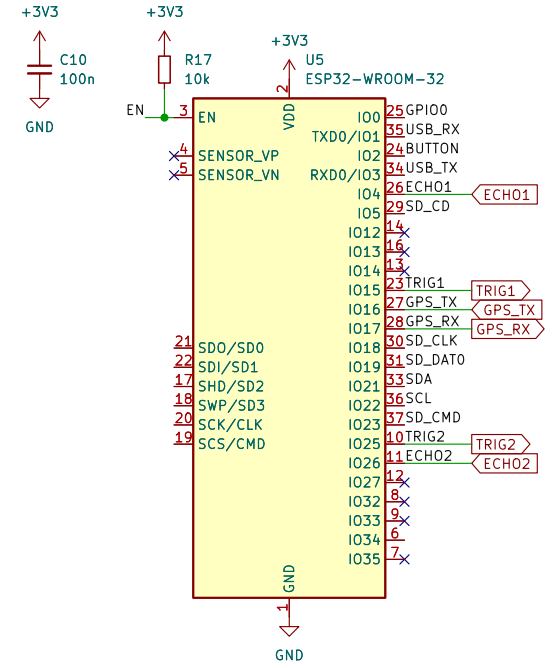
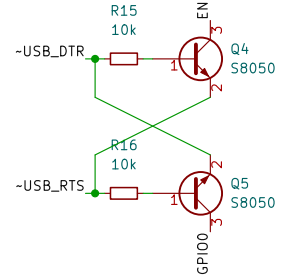
Missing:  
 \* Power LEDs  
 \* Power-Switch (with support for GPS backup!)

Sheet: /Power Supply/  
 File: power\_supply.kicad\_sch

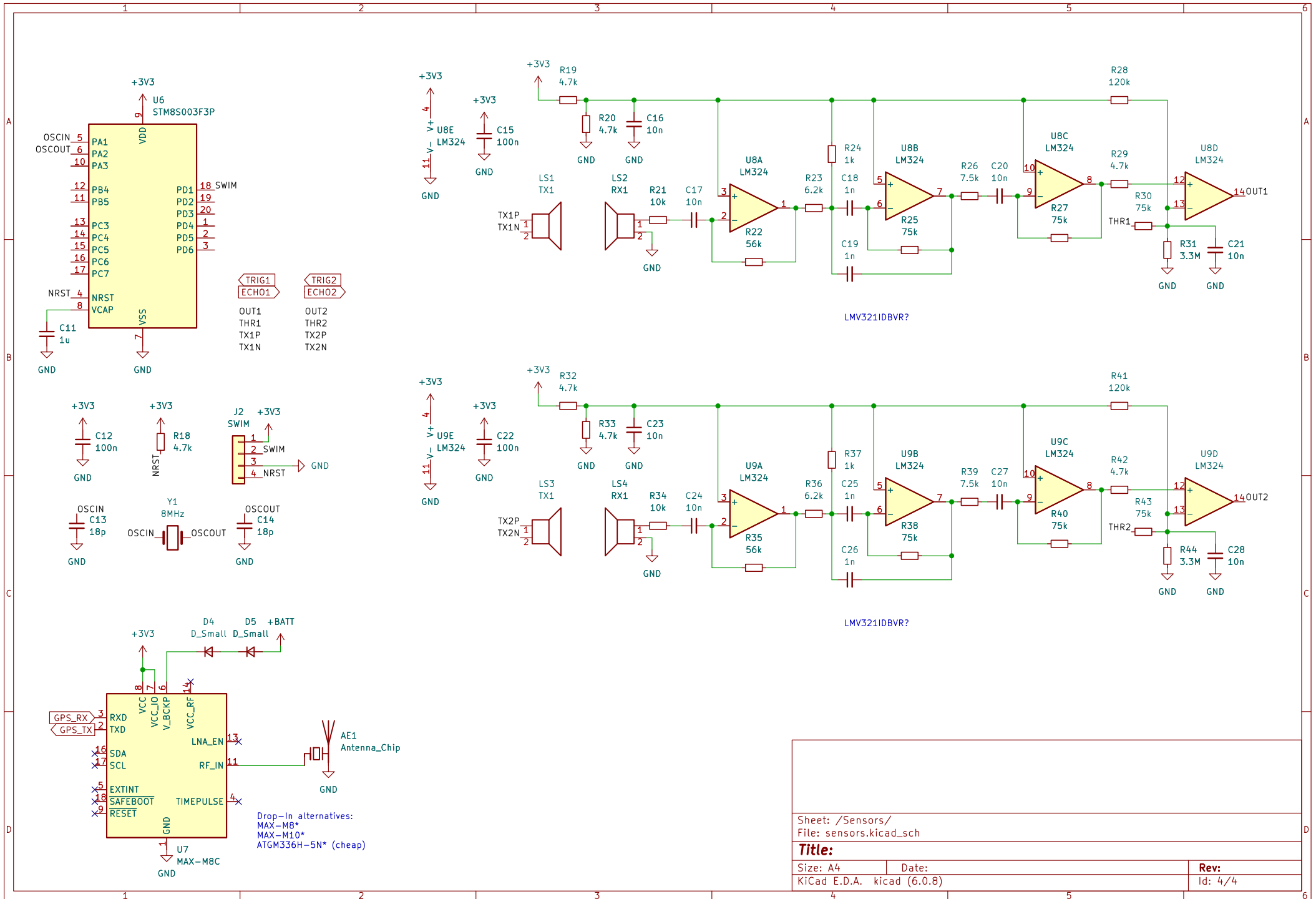
<b>Title:</b>	
Size: A4	Date:
KiCad E.D.A. kicad (6.0.8)	Rev: Id: 2/4



CP2102N or CP2102 can be used



Sheet: /Controller/  
 File: controller.kicad\_sch  
**Title:**  
 Size: A4 Date:  
 KiCad E.D.A. kicad (6.0.8) Rev:  
 Id: 3/4



Sheet: /Sensors/  
 File: sensors.kicad\_sch

**Title:**

Size: A4  
 KiCad E.D.A. kicad (6.0.8)

Date:

Rev:

Id: 4/4

Drop-In alternatives:  
 MAX-M8\*  
 MAX-M10\*  
 ATGM336H-5N\* (cheap)